

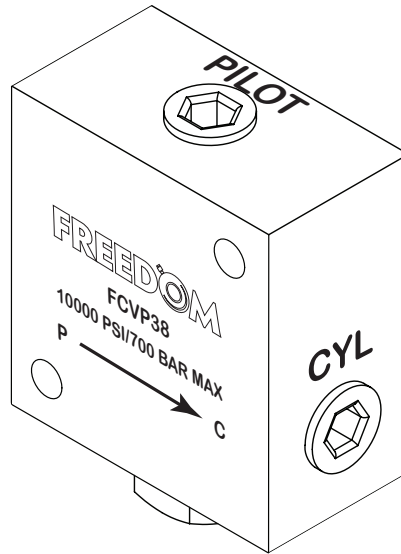
# FREEDOM

## INDUSTRIAL HYDRAULICS

---

### FCVP38 10,000 P.S.I. (MAX) PILOT OPERATED CHECK VALVE, 3/8" NPTF SETUP • OPERATING • MAINTENANCE INSTRUCTIONS

---



---

#### IMPORTANT: READ THESE INSTRUCTIONS BEFORE OPERATING

Before operating, study, understand and follow all setup, operating and maintenance instructions that accompanied this device. Hazards such as pressurized hydraulic fluid bursting from hoses or fittings can happen if instructions are not followed. Failure to avoid hazards could cause accidents resulting in serious or fatal personal injury and/or property damage.

It is the responsibility of the owner to make sure all personnel read this manual prior to using this device. It is also the responsibility of the device owner to keep these instructions intact and in a convenient location for all to see and read. If these instructions are lost or not legible, contact FREEDOM for a free replacement. If the operator is not fluent in English, the product and safety instructions shall be read to and discussed with the operator in the operator's native language by the purchaser/owner or his designee, making sure that the operator comprehends its contents.

---

#### **WARNING**

- The system operating pressure must not exceed the pressure rating of the lowest rated component in the system.
- Avoid sharp bends and kinks when routing hydraulic hoses.
- Do not drop heavy objects on hoses.
- Do not use the hydraulic hose to carry a hydraulic component.
- Keep hydraulic equipment away from flames and heat.
- Keep hose away from sharp objects and eliminate abrasion.
- Inspect the system before each use. Replace questionable components immediately.
- Use only compatible fluids.
- Make sure fittings are correctly and completely fastened together.
- Never attempt to disconnect fittings while under system pressure.
- Be sure pressure system and setup are stable before using.

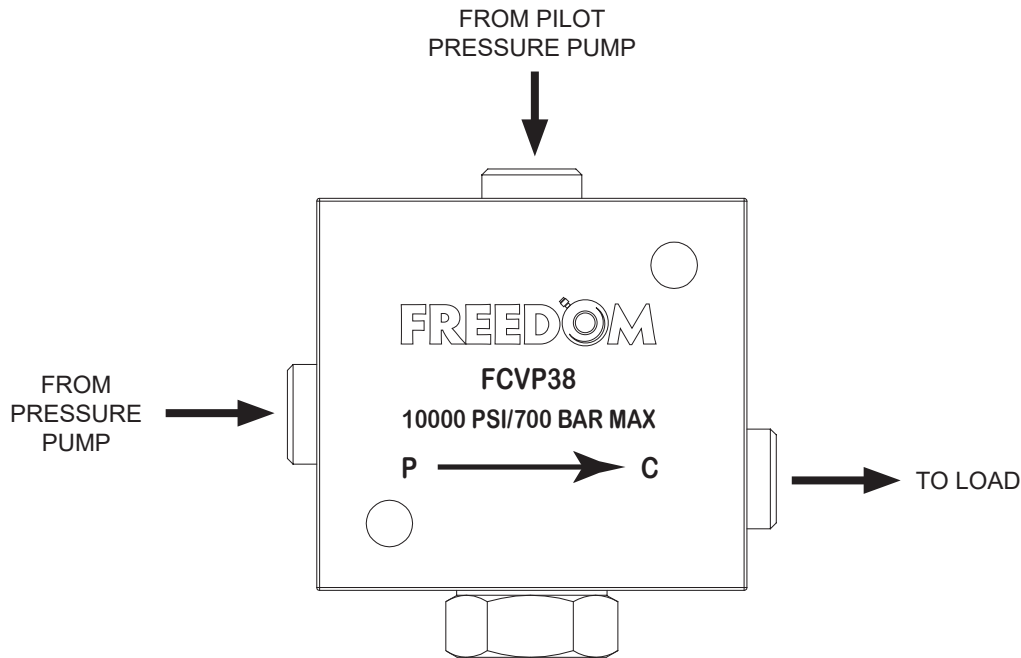
## OPERATING INSTRUCTIONS

### SINGLE ACTING CYLINDER SETUP

1. Remove thread plugs and connect PILOT and PUMP ports to pump or pumps.
2. Connect CYL port to load.

### DOUBLE ACTING CYLINDER SETUP

1. If the pump is double-acting ('A' and 'B' ports), connect PUMP port to 'A' port on pump, and CYL port to EXTEND port on cylinder.
2. Connect cylinder RETRACT port and PILOT port on valve to an inline T-fitting and connect inline T-fitting to 'B' port on pump.



## PREVENTATIVE MAINTENANCE

1. Keep components clean at all times. Use every precaution to guard against dirt entering the system.
2. Cover fittings with dust caps when not connected to the system.
3. Change fluid in system components as recommended by the manufacturer.
4. Leave hydraulic hoses in the carton until needed.
5. Store hoses away from direct sunlight, moisture, or temperatures above 75°F (24°C) or below 50°F (10°C).
6. Do not stack hoses. The weight of the pile may flatten hoses on the bottom. Hang the hoses.

## REPAIR SERVICE

### WARRANTY

This product is covered by a Limited Lifetime Warranty. For details see the back cover of FREEDOM's product catalog.

It will be necessary to provide the FREEDOM Authorized Service Center with a copy of the bill of sale if requesting warranty repair. If the authorized service center determines your product is eligible for warranty repair, the repair will be made at no charge and returned freight prepaid. The cost of non-warrantable service, repair, and return freight is the customer's responsibility.

If your FREEDOM product requires service or repair, contact the FREEDOM Customer Service Department for the location of the nearest FREEDOM Authorized Service Center.

Freedom Industrial Hydraulics  
226 NW Platte Valley Dr.  
Riverside, MO 64150  
(816) 541-3243 • Fax: (816) 541-3246  
[www.freedomhydraulics.com](http://www.freedomhydraulics.com)