

### 1. RECEIVING INSTRUCTIONS

Visually inspect all components for shipping damage. Shipping damage is not covered by warranty. Any shipping damage is found, please notify carrier. The carrier is responsible for all repair and replacement costs resulting from damage during shipping.

### 2. SAFETY ISSUES



Read all instructions, warnings and cautions carefully. Follow all safety precautions to avoid personal injury or property damage during operation. Powerram cannot be responsible for damage or injury resulting from unsafe and/or incorrect operation, also lack of maintenance. If you have never been trained on high-pressure hydraulic safety, consult your distribution or service center.

### 3. WARNING



Wear proper protective gear when operating hydraulic equipment.



**STAY CLEAR OF LOADS SUPPORTED BY HYDRAULICS.** When use a cylinder as a load lifting device, should never be used as a load holding device. After the load has been raised or lowered, it must always be blocked mechanically.



**USE ONLY RIGID PIECES TO HOLD LOADS.** Carefully select steel or wood blocks that are capable of supporting the load. Never use a hydraulic cylinder as a shim or spacer in any lifting or pressing application.



To avoid personal injury keep hands and feet away from cylinder and workpiece during operation.



**DO NOT EXCEED EQUIPMENT RATINGS.** Never attempt to spread a load weighing more than the capacity of the cylinder. Overloading causes equipment failure and possible personal injury. Max. pressure of cylinder is 700 bar ( 10,000 psi ). Do not connect a cylinder to a pump with a higher pressure rating.



Never set the relief valve to a higher pressure than the maximum rated pressure of the pump. Higher settings may result in equipment damage and/or personal injury.



The system operating pressure must not exceed the pressure rating of the lowest rated component in the system. Suggest to install pressure gauges in the system to monitor operating pressure.



**AVOID DAMAGING HYDRAULIC HOSE.** Avoid sharp bends and kinks when routing hydraulic hoses. Using a bent or kinked hose will cause back-pressure. Sharp bends and kinks will internally damage the hose leading to premature hose failure.



**DO NOT DROP SHARP / HEAVY OBJECTS ON HOSE.** Keep hose out of heavy traffic areas. This will cause internal damage to hose wire strands. Applying pressure to a damaged hose may cause it to rupture.



**DO NOT CARRY OR DRAG HYDRAULIC EQUIPMENT BY THE HOSES.** Lifting hydraulic equipment by the hoses or swivel couplers may damage the rams.



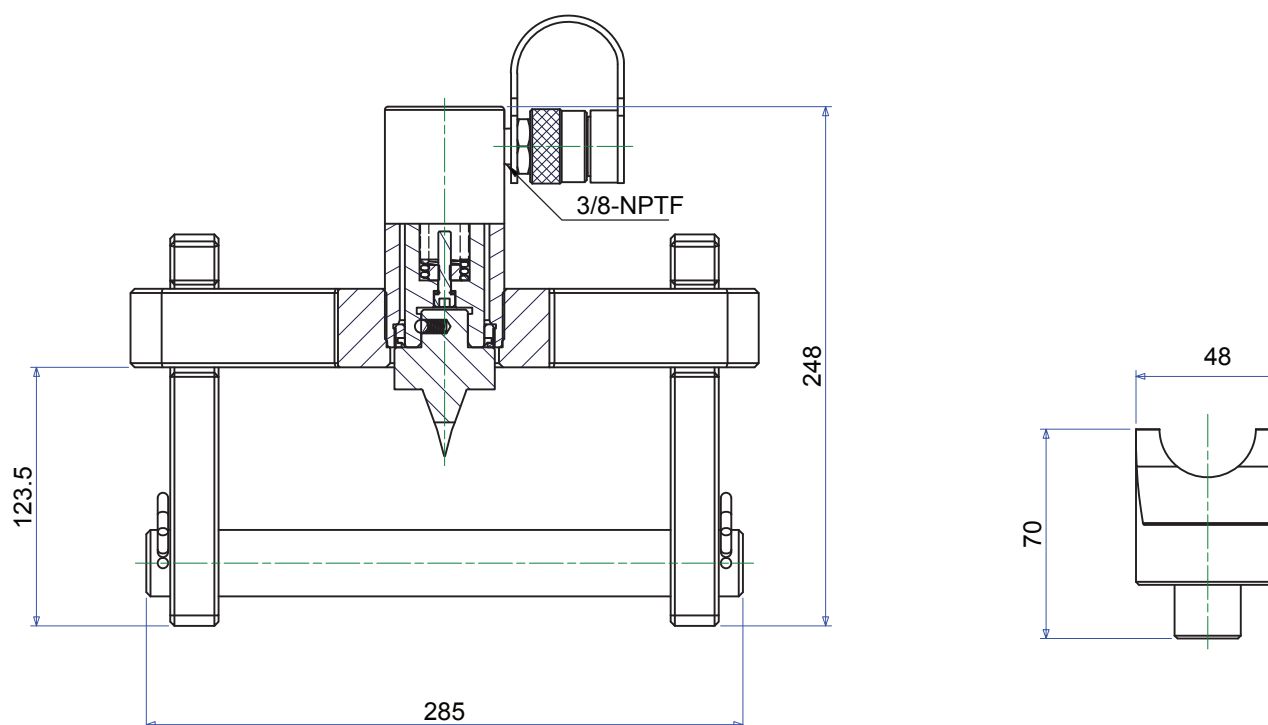
**KEEP HYDRAULIC EQUIPMENT AWAY FROM FLAMES.** Excessive heat will soften packings and seals, which may result in fluid leaks. Protect hoses and cylinders from weld spatter, which may damage plunger rods and hose.



Hydraulic equipment must only be serviced by a qualified hydraulic technician.

## Specification

Model No.	Max Flange Thickness (mm)	Stud Size (mm)	Standard Wedge (mm)	Capacity (ton)	Stroke (mm)	Oil Cap. (c.c.)	Weight (kg)
FS10	216	31.75	3-29	10	51	73	18



## Exploded Drawing

# HYDRAULIC FLANGE SPREADER MODEL:FS10 CAPACITY:10 TON

REF NO.	PARTS NO.	DESCRIPTION	QTY
01	70000615	Body	1
02	70000616	Cylinder	1
03	70000617	Adjustable Jaw	2
04	70000618	Standard 30° Blade	1
05	70000619	Pin	1
06	70000620	R Clip	2

