

SINGLE ACTING CYLINDERS



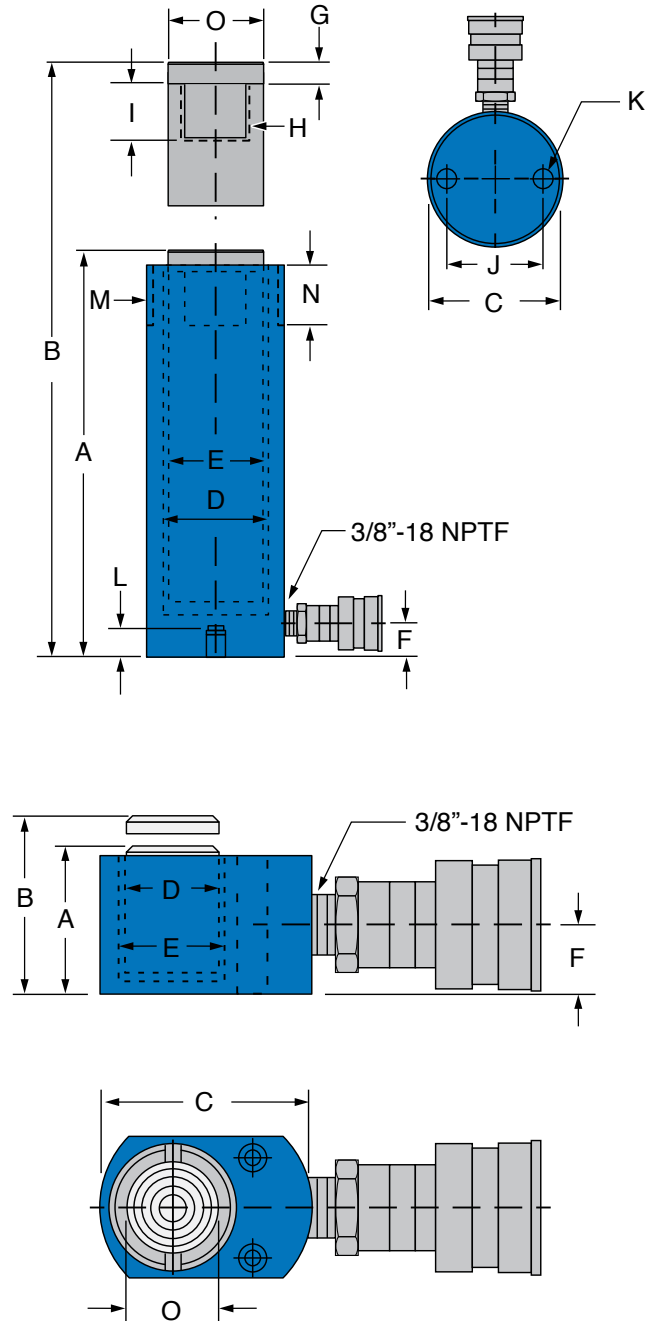
SINGLE ACTING CYLINDERS

5-100 TON CAPACITY | .25"-14" STROKE | 10,000 PSI MAX. PRESSURE

5-100 TON CAPACITY | .25"-14" STROKE | 10,000 PSI MAX. PRESSURE

Capacity (tons)	Stroke (in.)	Model #	Cylinder Effective Area (in. ²)	Oil Capacity (in. ³)	A	B	C	D	E	F	G	H	I
					Collapsed Height (in.)	Extended Height (in.)	Outside Diameter (in.)	Cylinder Bore Dia. (in.)	Plunger Diameter (in.)	Base to Coupler Port (in.)	Saddle Distance above Cyl. (in.)	Piston Internal Thread (in.)	Piston Thread Length (in.)
5	0.64	S50	1.1	0.7	1.64	2.28	2.32	1.18	1	0.75	0	—	—
5	1.05	S51	1.1	1.2	4.35	5.4	1.5	1.18	1	0.79	0.25	3/4"-16UCF	0.57
5	3.02	S53	1.1	3.3	6.52	9.54	1.5	1.18	1	0.79	0.25	3/4"-16UCF	0.57
5	5.04	S55	1.1	5.5	8.48	13.52	1.5	1.18	1	0.79	0.25	3/4"-16UCF	0.57
5	7.06	S57	1.1	7.7	10.74	17.8	1.5	1.18	1	0.79	0.25	3/4"-16UCF	0.57
5	9.09	S59	1.1	10	12.81	21.9	1.5	1.18	1	0.79	0.25	3/4"-16UCF	0.57
10	1.00	S101	2.25	2.2	3.62	4.62	2.25	1.69	1.5	0.75	0.25	1"-8UNC	0.85
10	2.09	S102	2.25	4.7	4.84	6.93	2.25	1.69	1.5	0.75	0.25	1"-8UNC	0.89
10	4.06	S104	2.25	9.1	6.87	10.93	2.25	1.69	1.5	0.75	0.25	1"-8UNC	0.89
10	5.97	S106	2.25	13.4	9.84	15.81	2.25	1.69	1.5	0.75	0.25	1"-8UNC	0.89
10	7.88	S108	2.25	17.7	11.93	19.81	2.25	1.69	1.5	0.75	0.25	1"-8UNC	0.89
10	10.00	S1010	2.25	22.4	13.87	23.87	2.25	1.69	1.5	0.75	0.25	1"-8UNC	0.89
10	12.03	S1012	2.25	27.0	15.84	27.87	2.25	1.69	1.5	0.75	0.25	1"-8UNC	0.89
10	14.10	S1014	2.25	31.6	17.65	31.75	2.25	1.69	1.5	0.75	0.25	1"-8UNC	0.89
15	1.00	S151	3.04	3.0	4.75	5.75	2.75	1.97	1.57	1.02	0.37	1"-8UNC	1
15	1.84	S152	3.04	5.6	5.94	7.78	2.75	1.97	1.57	0.98	0.37	1"-8UNC	1
15	3.81	S154	3.04	11.6	8	11.81	2.75	1.97	1.57	0.98	0.37	1"-8UNC	1
15	5.81	S156	3.04	17.7	10.75	16.56	2.75	1.97	1.57	0.98	0.37	1"-8UNC	1
15	7.75	S158	3.04	23.6	12.81	20.56	2.75	1.97	1.57	0.98	0.37	1"-8UNC	1
15	9.82	S1510	3.04	29.9	14.81	24.63	2.75	1.97	1.57	0.98	0.37	1"-8UNC	1
15	11.94	S1512	3.04	36.4	16.75	28.69	2.75	1.97	1.57	0.98	0.37	1"-8UNC	1
15	14.00	S1514	3.04	42.7	18.69	32.69	2.75	1.97	1.57	0.98	0.37	1"-8UNC	1
25	1.06	S251	5.14	5.5	5.38	6.44	3.31	2.56	2.2	0.98	0.39	1 1/2"-16UNC	1
25	2.00	S252	5.14	10.3	6.88	8.88	3.31	2.56	2.2	0.98	0.39	1 1/2"-16UNC	1
25	3.94	S254	5.14	20.3	8.81	12.75	3.31	2.56	2.2	0.98	0.39	1 1/2"-16UNC	1
25	5.87	S256	5.14	30.2	10.88	16.75	3.31	2.56	2.2	0.98	0.39	1 1/2"-16UNC	1
25	7.93	S258	5.14	40.8	12.88	20.81	3.31	2.56	2.2	0.98	0.39	1 1/2"-16UNC	1
25	10.00	S2510	5.14	51.5	14.88	24.88	3.31	2.56	2.2	0.98	0.39	1 1/2"-16UNC	1
25	12.19	S2512	5.14	62.7	16.81	29	3.31	2.56	2.2	0.98	0.39	1 1/2"-16UNC	1
25	14.25	S2514	5.14	73.3	18.81	33.06	3.31	2.56	2.2	0.98	0.39	1 1/2"-16UNC	1
30	8.29	S308	6.49	53.8	15.4	23.69	4	2.87	2.2	1.97	0.39	1 1/2"-16UNC	1
55	2.12	S552	11.04	23.4	6.94	9.06	5	3.75	3.15	1.3	0.12	—	0.59
55	4.02	S554	11.04	44.4	8.97	12.99	5	3.75	3.15	1.38	0.12	—	0.59
55	6.22	S556	11.04	68.7	11.19	17.41	5	3.75	3.15	1.38	0.12	—	0.59
55	10.11	S5510	11.04	111.7	15.04	25.15	5	3.75	3.15	1.38	0.12	—	0.59
55	13.37	S5513	11.04	147.7	18.07	31.44	5	3.75	3.15	1.38	0.12	—	0.59
75	5.97	S756	16.1	96.1	11.45	17.42	5.75	4.53	3.74	1.18	0.22	—	0.49
75	13.09	S7513	16.1	210.7	19.5	32.59	5.75	4.53	3.74	1.18	0.22	—	0.49
100	2.08	S1002	20.57	42.8	8.66	10.74	6.99	5.12	4.13	1.57	0.12	—	0.59
100	6.73	S1006	20.57	138.5	14.1	20.83	6.99	5.12	4.13	1.57	0.12	—	0.59
100	10.12	S10010	20.57	208.2	18.05	28.17	6.99	5.12	4.13	1.57	0.12	—	0.59

Model #	Base Mounting Holes			Collar Thread (in.)	Collar Thread Length (in.)	Saddle Diameter (in.)	Weight (lbs.)
	Bolt Circle (in.)	Thread (in.)	Thread Depth (in.)				
	J	K	L				
S50	—	—	—	—	—	1	1.87
S51	1	1/4"-20UNC	0.51	1 1/2"-16UN	1.1	1	2.31
S53	1	1/4"-20UNC	0.51	1 1/2"-16UN	1.1	1	3.09
S55	1	1/4"-20UNC	0.51	1 1/2"-16UN	1.1	1	3.75
S57	1	1/4"-20UNC	0.51	1 1/2"-16UN	1.1	1	4.63
S59	1	1/4"-20UNC	0.51	1 1/2"-16UN	1.1	1	5.4
S101	1.56	5/16"-18UNC	0.55	2 1/4"-14UNC	1.14	1.38	3.80
S102	1.56	5/16"-18UNC	0.55	2 1/4"-14UNC	1.14	1.38	4.15
S104	1.56	5/16"-18UNC	0.55	2 1/4"-14UNC	1.14	1.38	6.80
S106	1.56	5/16"-18UNC	0.55	2 1/4"-14UNC	1.14	1.38	9.60
S108	1.56	5/16"-18UNC	0.55	2 1/4"-14UNC	1.14	1.38	11.40
S1010	1.56	5/16"-18UNC	0.55	2 1/4"-14UNC	1.14	1.38	13.20
S1012	1.56	5/16"-18UNC	0.55	2 1/4"-14UNC	1.14	1.38	15.00
S1014	1.56	5/16"-18UNC	0.55	2 1/4"-14UNC	1.14	1.38	16.60
S151	1.88	3/8"-16UNC	0.51	2 3/4"-16UNC	1.18	1.5	7.00
S152	1.88	3/8"-16UNC	0.51	2 3/4"-16UNC	1.18	1.5	8.40
S154	1.88	3/8"-16UNC	0.51	2 3/4"-16UNC	1.18	1.5	11.00
S156	1.88	3/8"-16UNC	0.51	2 3/4"-16UNC	1.18	1.5	15.00
S158	1.88	3/8"-16UNC	0.51	2 3/4"-16UNC	1.18	1.5	17.60
S1510	1.88	3/8"-16UNC	0.51	2 3/4"-16UNC	1.18	1.5	20.20
S1512	1.88	3/8"-16UNC	0.51	2 3/4"-16UNC	1.18	1.5	22.80
S1514	1.88	3/8"-16UNC	0.51	2 3/4"-16UNC	1.18	1.5	25.20
S251	2.31	1/2"-13UNC	0.75	3 5/16"-12UNC	1.95	2	11.60
S252	2.31	1/2"-13UNC	0.75	3 5/16"-12UNC	1.95	2	14.60
S254	2.31	1/2"-13UNC	0.75	3 5/16"-12UNC	1.95	2	18.60
S256	2.31	1/2"-13UNC	0.75	3 5/16"-12UNC	1.95	2	22.60
S258	2.31	1/2"-13UNC	0.75	3 5/16"-12UNC	1.95	2	26.60
S2510	2.31	1/2"-13UNC	0.75	3 5/16"-12UNC	1.95	2	30.60
S2512	2.31	1/2"-13UNC	0.75	3 5/16"-12UNC	1.95	2	34.20
S2514	2.31	1/2"-13UNC	0.75	3 5/16"-12UNC	1.95	2	38.20
S308	2.2	1/2"-13UNC	0.75	3 5/16"-12UNC	1.95	2	42.55
S552	3.75	1/2"-13UNC	0.87	5"-12UNC	1.75	2.76	32.63
S554	3.75	1/2"-13UNC	0.87	5"-12UNC	1.75	2.76	47.27
S556	3.75	1/2"-13UNC	0.87	5"-12UNC	1.75	2.76	56.04
S5510	3.75	1/2"-13UNC	0.87	5"-12UNC	1.75	2.76	71.91
S5513	3.75	1/2"-13UNC	0.87	5"-12UNC	1.75	2.76	84.83
S756	4.5	3/4"-10UNC	1	5 3/4"-12UNC	1.75	2.76	72.62
S7513	4.5	3/4"-10UNC	1	5 3/4"-12UNC	1.75	2.76	117.9
S1002	—	—	—	6 7/8"-12UNC	1.75	2.76	88.76
S1006	5.5	3/4"-10UNC	1	6 7/8"-12UNC	1.75	2.76	134.31
S10010	5.5	3/4"-10UNC	1	6 7/8"-12UNC	1.75	2.76	162.66



California residents - These products may contain a chemical known to cause cancer or reproductive harm. www.P65Warnings.ca.gov

California residents - These products may contain a chemical known to cause cancer or reproductive harm. www.P65Warnings.ca.gov