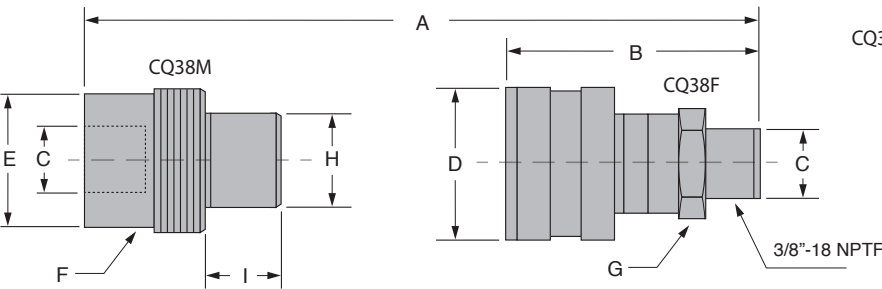
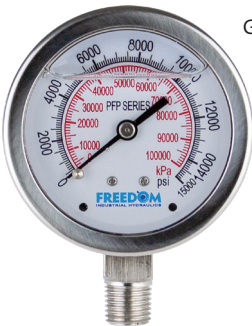


HYDRAULIC COUPLERS



Model #	Coupler Type	Half	Dimensions (in.)									Weight (lbs.)
			A	B	C	D	E	F	G	H	I	
CQ38M	High-Flow	Male	3.45	--	3/8-18NPTF	--	1.06	0.90	--	0.75	0.63	0.22
CQ38F	High-Flow	Female	3.45	2.83	3/8-18NPTF	1.40	--	--	0.98	--	--	0.25

GAUGES



GS2514



GS4014



GS6014

FEATURES

- Highly accurate
- Calibrated in dual scale for reading in PSI and kPa
- GS series gauges are glycerin filled
- Stainless steel case protects against vibration, pulsation, and corrosion
- Stainless steel internal wetted parts
- ASME B40.100 compliant
- RoHS compliant

Model #	Face Diameter	Gauge Type	Accuracy	Internals	Thread
	(in.)				
GS2514	2.5	Wet	±1.5%	Stainless	1/4"-18NPTF
GS4014	4	Wet	±1%	Stainless	1/4"-18NPTF
GS6014	6	Wet	±1%	Stainless	1/4"-18NPTF

California residents - These products may contain a chemical known to cause cancer or reproductive harm. [www.P65Warnings.ca.gov](http://www.P65Warnings.ca.gov)